

**TO: COMPANY ANNOUNCEMENTS OFFICE
ASX LIMITED**

DATE: 26 JUNE 2012

Two Prospecting Licence Extensions Granted

Botswana Metals Limited ("BML") is pleased to advise that the Department of Geological Services has granted an extension for two Prospecting Licences – PL46/2004 Sampowane and PL47/2004 Gobe Shear - to continue exploration for metals in the Limpopo Mobile Zone in Botswana.

The two Prospecting Licences have been extended until 31 March 2014. They collectively cover 633 square kilometres and surround the recent three discoveries at Airstrip Copper and Maibele North on PL110/94, and Dibete on PL111/94.

Figure 1, on the following page, shows the location of Botswana Metals Ltd's tenements.

Soil sampling will be completed during the third quarter of 2012 to infill between the Dibete prospect in PL111/94, Dibete Extension in PL54/98 and Dibete East on PL47/2004 (figure 2). The aim of the sampling program is to fully define the copper-silver and nickel anomalies found from previous work.

Market Cap

Approx. \$3.4M at 1.8c per share

Cash

\$2M (31 Mar 2012)

Issued Capital

188,135,317 ordinary shares
116,275,143 listed options at 10c

Substantial shareholders

1. Vermar Pty Ltd 15.7%
2. Polarity B Pty Ltd 7.8%
3. Bell IXL Investments Ltd 5.9%

Directors

Mr Patrick Volpe (Chairman)
Mr Massimo Cellante
(Non-executive Director)
Dr Paul Woolrich
(Non-executive Director)

www.botswanametals.com.au

Registered Office

Suite 5, Level 1,
310 Whitehorse Road
Balwyn, Victoria, 3103

P +61 3 9830 7676

F +61 3 9836 3056

Contact

Pat Volpe
P +61 3 9830 7676

ABN 96 122 995 073

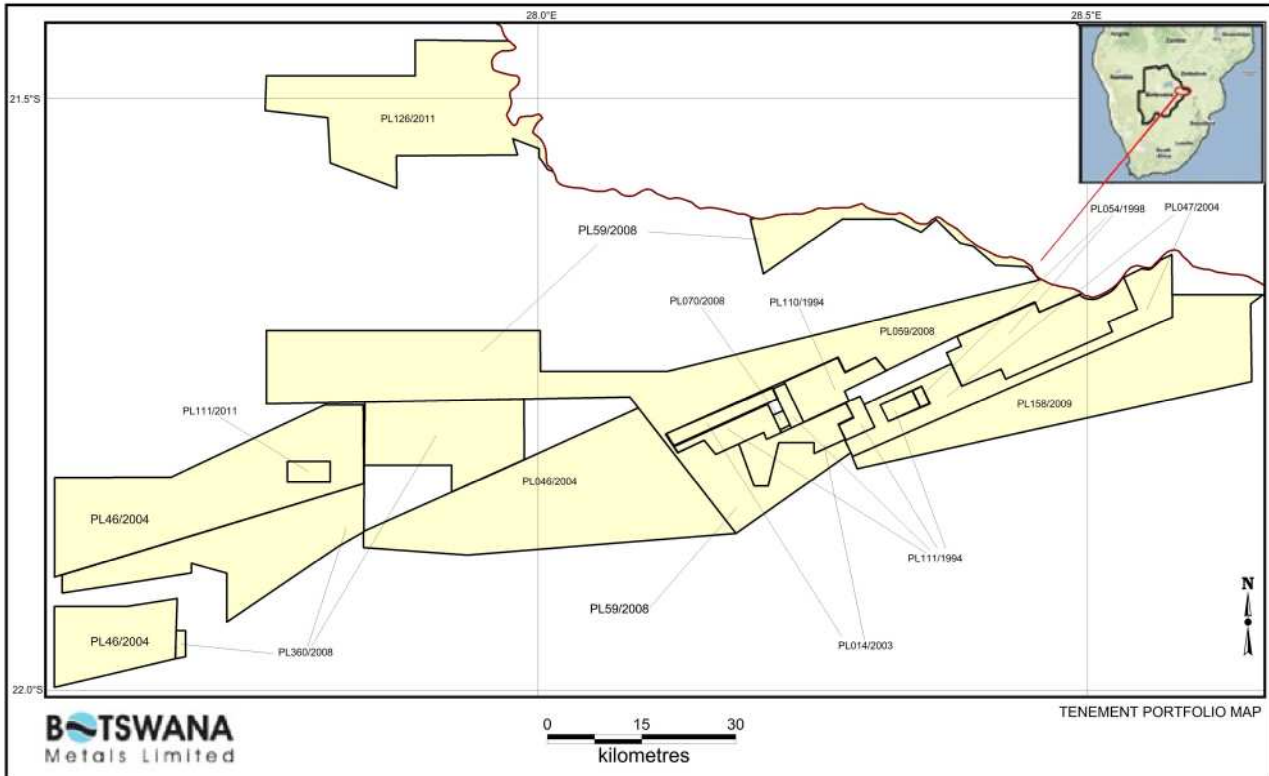


Figure 1: Botswana Metals Ltd's Tenement Portfolio

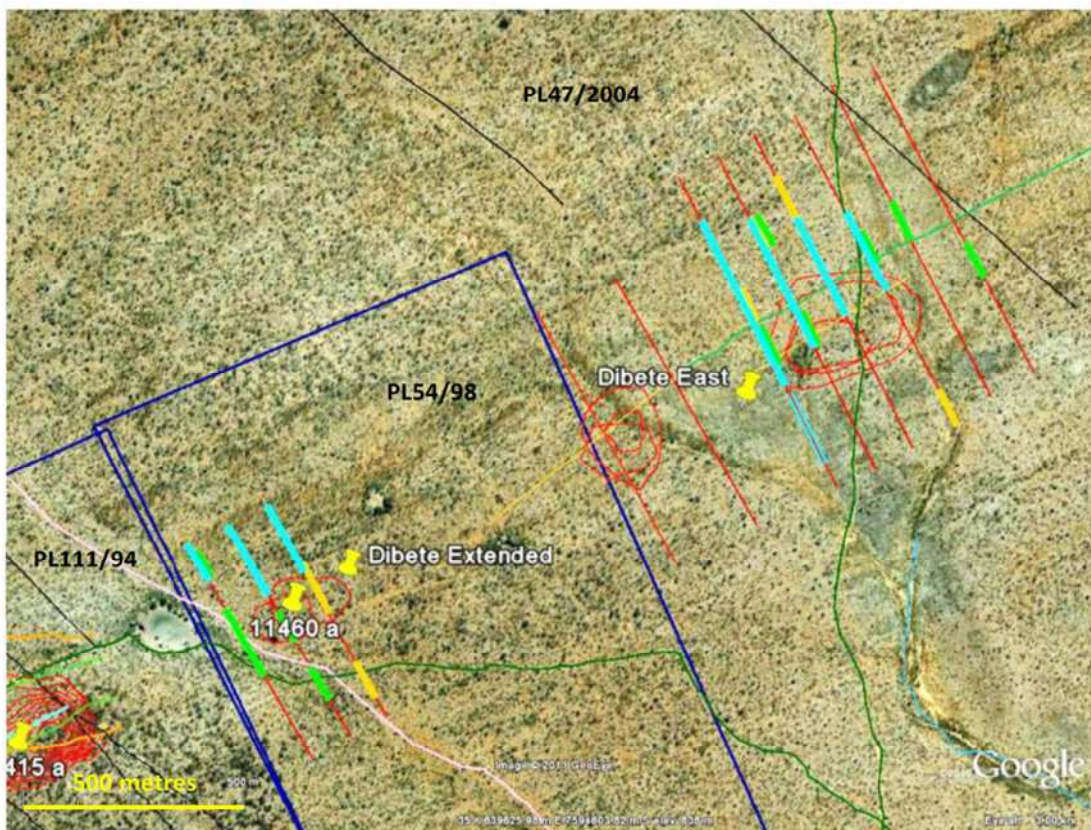


Figure 2: Plans showing Dibete East and Dibete Extension soil anomalies and tenements, (blue=lead, orange=copper, green=nickel).

Pat Volpe
Chairman

Competent Persons Statement.

The information in this report that relates to Exploration Results is based on information compiled by Mr Peter Temby, a consultant employed by Anpet Exploration Pty Ltd and a member of The Australian Institute of Geoscientists.

Mr Temby has sufficient experience that is relevant to the style of mineralization and type of deposit under consideration and to the activities which he is undertaking to qualify as a Competent Person as defined in the 2004 Edition of the Australasian Code for Reporting of Exploration Results, Mineral Resources and Ore Reserves. Mr Temby consents to the inclusion in this report of matters based on his information in the form and context in which it appears.

About Botswana Metals Limited

- Botswana Metals Limited is listed on the Australian Securities Exchange (ASX) and its stock code (ticker) is BML. BML is a mineral exploration company fully focused on its portfolio of exploration tenements covering approximately 2,300 sq. km all located in Botswana.
- BML also has listed options (ASX stock code: BMLO) that are exercisable at \$0.10 (10 cents) per share at any time up to 5pm AEST on 30 June 2013.
- BML's objective is to discover an economic base and precious metals resource in eastern Botswana on the well-known Limpopo Belt which extends into Botswana from its neighbouring country Zimbabwe.
- Recent exploration has resulted in three discoveries for Nickel-Copper and Copper-Silver known as Airstrip Copper, Maibele North and Dibete. The Ni-Cu deposit at Maibele North is just east of Airstrip Copper whilst Dibete is 7 km to the south of Airstrip Copper.
- To the east of these discoveries, a recent VTEM program has identified at least 27 new anomalies that are planned to be part of the company's exploration focus in 2012.
- BML has solid logistical support and the projects benefit from excellent infrastructure.
- The Company is managed by experienced personnel who have many years' experience in Botswana as well as other African countries. Botswana is considered to be one of the most advanced African countries in respect to its mining and exploration laws, and for safety and education where English is spoken freely.
- BML has offices in Australia (Melbourne) and in Botswana (at Francistown and Tshokwe).